

Ministerial Conference: Nature Protection in the Caucasus
Promoting Transboundary Cooperation for CBD Implementation
9-11 March 2006, Berlin – Germany



Landscape Planning as an Instrument for Ecosystem Management


Prof. Dr. Christina von Haaren, University of Hannover

Landscape Planning as an Instrument for Ecosystem Management

Prof. Dr. Christina von Haaren, University of Hannover

The presentation will deal with the components, structure and management capacity of landscape planning (as practised in Germany).

Landscape planning is a comprehensive environmental planning based on the concept of a multifunctional landscape. In the working context of landscape planning, the term landscape is defined as a region of the Earth and aesthetic, cultural, ecological and economic system which reflects the human perception and realisation (v. Haaren 2004; also see Council of Europe 2000). Landscape planning examines the sustainability of existing and proposed land uses in relation to environmental capacity and landscape character. It develops limits as well as opportunities for the organisation of human- natural systems with an emphasis on the spatial context. Landscape planning investigations address a wide variety of landscape functions, which range from the natural capacities of the landscape for agriculture and forestry, drinking water and flood protection to the actual function as habitats and for recreation . These landscape functions are integrated into a comprehensive concept which stresses the multifunctional character of the landscape features as well as measures to protect or develop these features. On the basis of such information and goals, landscape planning can support decision making in spatial planning on every planning tier of the planning system. It also provides information and environmental goals for environmental impact studies, the creation of an European habitat network "Natura 2000" strategic impact assessments and plans required by the Water Framework Directive. The landscape planning methodology, which has been developing for more than 30 years, provides quality standards for the collected information and measures. Implementation can be the task of town planning or regional planning. Also citizens and NGOs can use the landscape plan as a basis for decisions and actions. The public should be involved in the process of planning and implementation in order to support the transparency of the decision making process, as well as the acceptability and practicability of the goals. In order to open the expert plan for participation, goals and measures should clearly reflect the scope and limits of participation in showing alternatives as well as legally predefined priorities. Participation might be supported by the use of the new technologies (v. Haaren Warren-Kretzschmar 2006).



Landscape Planning as an Instrument for the Management of Ecosystems and Sustainable Landscapes

Christina v. Haaren
University of Hannover
Institute of Environmental Planning
www.laum.uni-hannover.de/iln/
5/06: www.umwelt.uni-hannover.de

Caucasus Conference Berlin 2006-03-10

Universität Hannover 

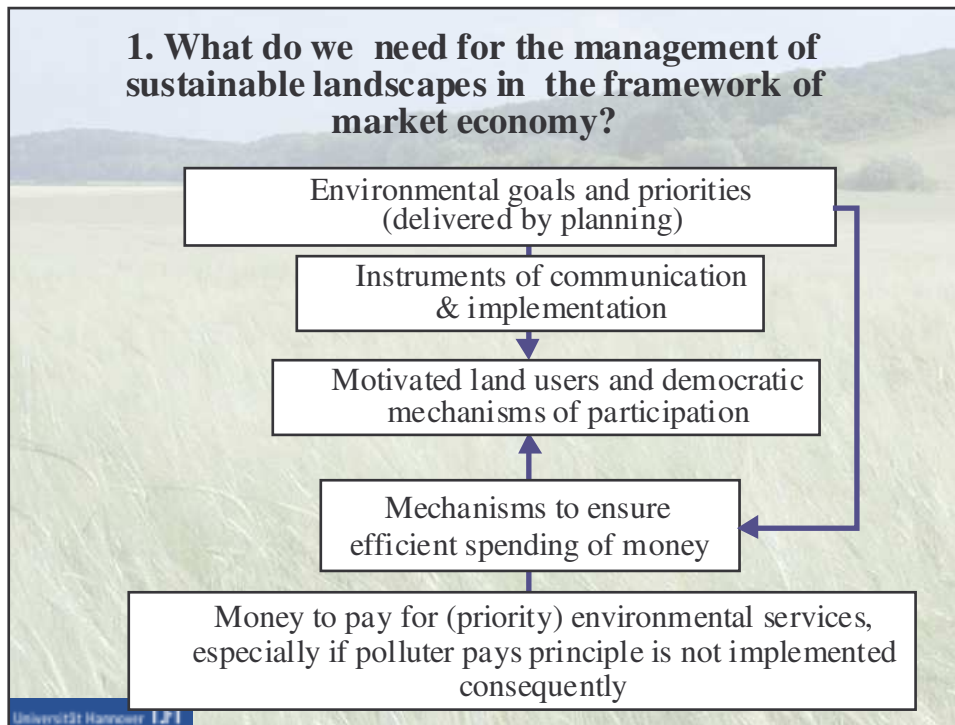
Structure

- **Requirements for the management of sustainable landscapes**
- **Overview of capacities of landscape planning (relevant to theses preconditions)**

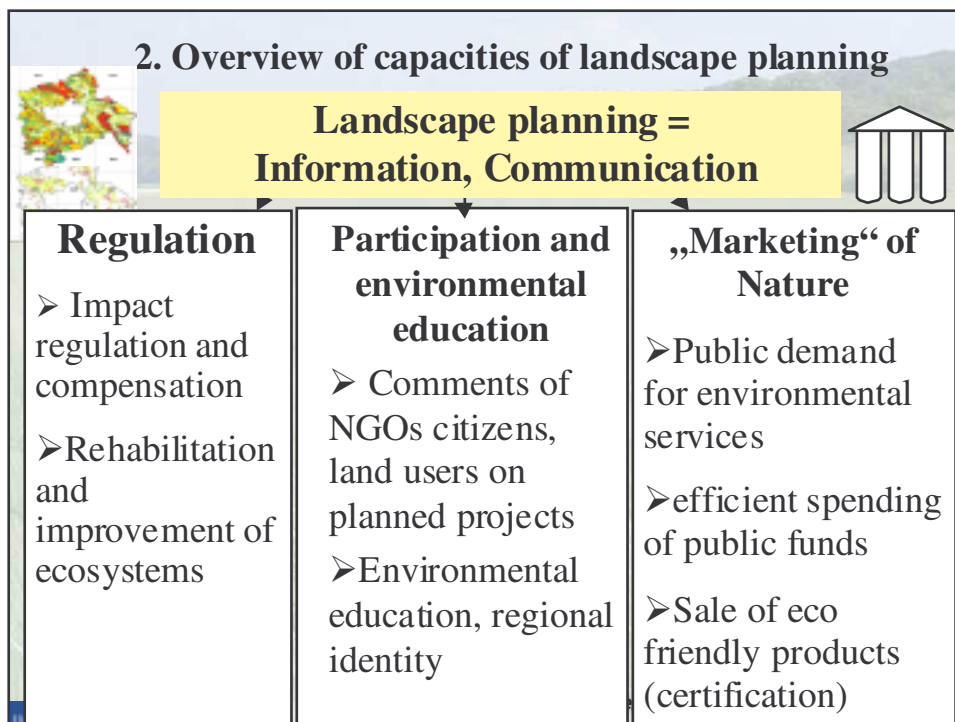
Caucasus Conference Berlin 2006-03-10

Universität Hannover 

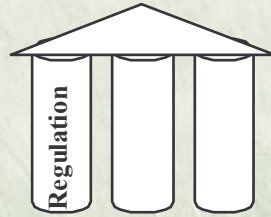
1. What do we need for the management of sustainable landscapes in the framework of market economy?



2. Overview of capacities of landscape planning



2.1. Regulation and guidance in the use of the environment



Caucasus Conference Berlin 2006-03-10

Universität Hannover

Landscape Planning provides the environmental information basis for land use and development

Assessment of the values and resilience of an area on the basis of the landscape analysis as a condition for spatial development and project alternatives

Landscape analysis covers the aspects soil, water, air/ climate, fauna/ flora, natural scenery and cultural assets on different spatial scales

Caucasus Conference Berlin 2006-03-10

Universität Hannover

Soil: fertility, erosion, compression, contamination

Empfindlichkeit der Bodeneinheit gegenüber Verdichtung



Abbildung Exkurs 5-11: Ausschnitt aus dem Land

FH Erfurt „Die SUP in der Region alp

Cauc



Water

Important areas for flood protection

Ground water resources: importance and resilience



Abbildung Exkurs 5.11: Ausschnitt aus dem Land

Biodiversity: State and Evaluation

e.g. habitat networks



FH Erfurt, „Die SUP in der Region alpanung am Beispiel Nordthüringens“ (im Auftrag des BMBF)

potenziell äußerst selten oder einzigartig
 klugskonzept Region Oberfranken-Ost (2003)

Noise and fragmentation of the landscape

Traffic lines, traffic density, undissected natural areas



Durchschnittliche tägliche Verkehrsstärke

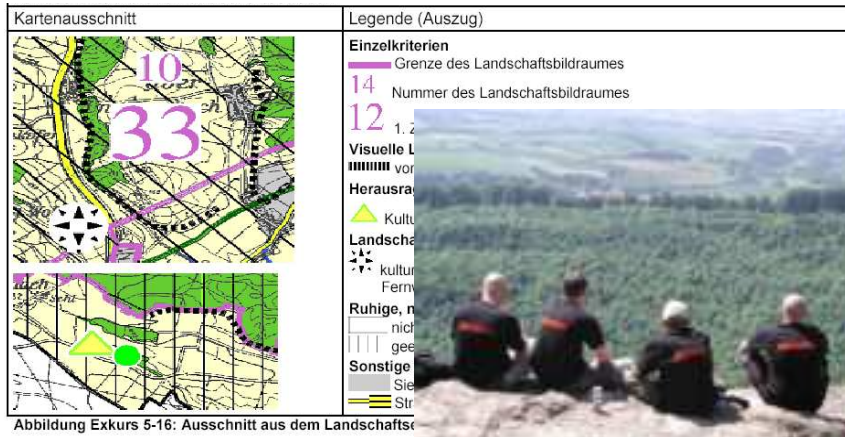
- über 30.000 Kfz/24 h
- 20.000 bis 30.000 Kfz/24 h
- 15.000 bis 20.000 Kfz/24 h
- 10.000 bis 15.000 Kfz/24 h
- 7.500 bis 10.000 Kfz/24 h
- 5.000 bis 7.500 Kfz/24 h
- 3.000 bis 5.000 Kfz/24 h
- 2.000 bis 3.000 Kfz/24 h
- 1.000 bis 2.000 Kfz/24 h
- unter 1.000 Kfz/24 h

Unzerschnittene verkehrsarme Räume

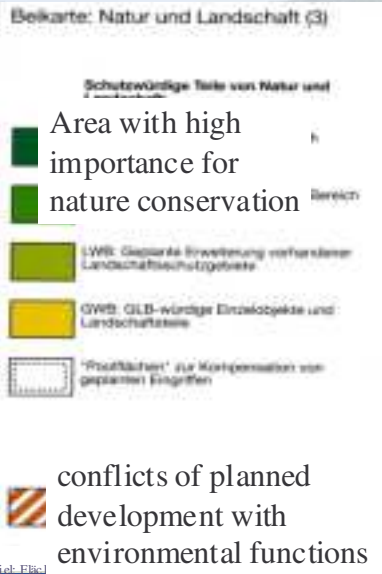
- Unzerschnittener verkehrsarmer Raum (Nettogröße über 100 km², Lage vollständig innerhalb des Kreisgebietes)
- Unzerschnittener verkehrsarmer Raum (Nettogröße zwischen 50 und 100 km², Lage vollständig innerhalb des Kreisgebietes)
- Unzerschnittener verkehrsarmer Raum

Landscape aesthetics and recreation

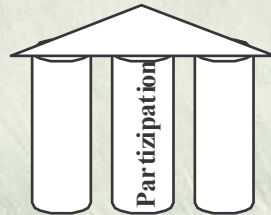
natural scenery and cultural assets



... Integration into the local zoning plan



2.2 Communication and participation of stakeholders and citizens



Caucasus Conference Berlin 2006-03-10

Universität Hannover

Participation

Landscape planning is an instrument of emancipation and democracy

- People take a strong interest in their immediate vicinity or if their way of land use is discussed



Interaktiver Königslutter Landschaftsplan

LANDSCHAFTSPLAN MITMACHEN LERNWELT PROJEKT-INFO SERVICE

Info-Brief
jetzt bestellen

Diskutieren
Sie mit uns

Interaktive Karten

Das ist neu

- 30. März 2004
Maßnahmenvorschläge am Elmhang online ... mehr
- 16. Februar 2004
Neue Inhalte im Kartenmodul ... mehr
- 10. Februar 2004
Ortskarte aus Königslutter ... mehr
- 05. Februar 2004
Panoramablicke über den Elmhang ... mehr
- Weitere 'Das ist Neu' Meldungen

Termine

- 25. April 2004, 11:00 Uhr
Tag der Forschung, Universität Hannover ... weitere Infos
- Zur Terminübersicht

Bürgerbeteiligung zur Landschaftsentwicklung am Elmhang, 15. März zu Bornum Foto: Astrid Lipold

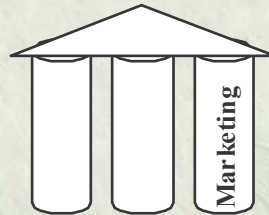
Willkommen zur interaktiven Landschaftsplanung in Königslutter am Elm

Die Stadt Königslutter am Elm erstellt derzeit einen Landschaftsplan. Diese Internet-Plattform informiert über den Planungsverlauf, stellt die Inhalte des Landschaftsplans dar und bietet Möglichkeiten zur Beteiligung für Bürgerinnen und Bürger. Der interaktive

Willkommen zur interaktiven Landschaftsplanung in Königslutter am Elm

Die Stadt Königslutter am Elm erstellt derzeit einen Landschaftsplan. Diese Internet-Plattform informiert über den Planungsverlauf, stellt die Inhalte des Landschaftsplans dar und bietet Möglichkeiten zur Beteiligung für Bürgerinnen und Bürger. Der interaktive

2.3. Support of “marketing of nature”

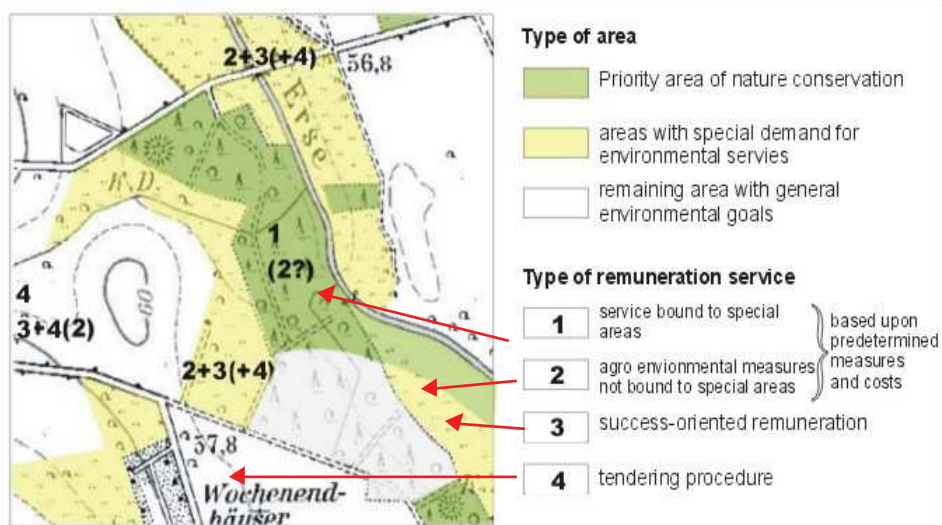


Caucasus Conference Berlin 2006-03-10

Universität Hannover

Efficient allocation of payments

Prioritising of financial support and adoption of the suitable type of remuneration according to the goals of the landscape plan



Where to use which type of remuneration?

Nature conservation products, tourism

Landscape planning defines areas with special nature conservation value as information basis for the certification of nature conservation products

Demand for nature and willingness to pay of the consumer as added value for farmers (on top of remuneration by tax payers money)

Naturschutz zum Genießen

"Regel, Merkmale zum Start der „Gastwirtschaftlichen Schenkung-Ökologie“"

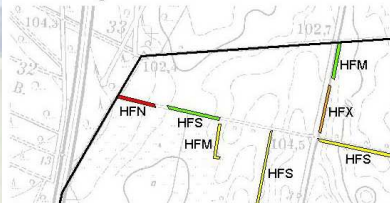


Caucasus Conference Berlin 2006-03-10

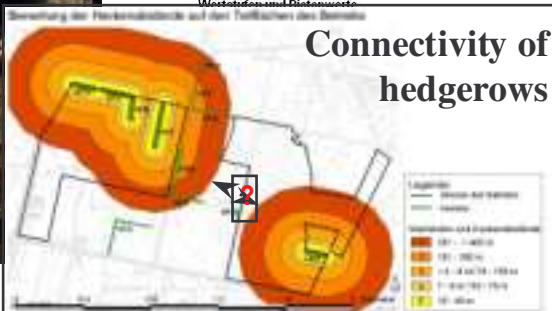
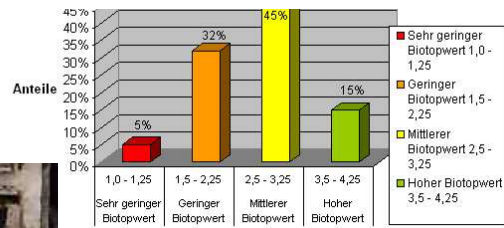
Universität Hannover

Landscape planning as information basis of eco-friendly farm management → Certification

Bewertung der Einzelhecken



Farm area covered by hedgerows of different habitat value



Struktur von REPRO






Conclusion

In the Caucasus ecoregion landscape planning could be

- an instrument of impact regulation, participation, “marketing” of nature and farm management
- in consequence it might be a step towards emancipation and supporting the democratic process

Caucasus Conference Berlin 2006-03-10

Universität Hannover



Thank you for your attention!

Caucasus Conference Berlin 2006-03-10

Universität Hannover