

**Ministerial Conference: Nature Protection in the Caucasus**  
Promoting Transboundary Cooperation for CBD Implementation  
9-11 March 2006, Berlin – Germany



**The High Conservation Value Forests (HCVF) Concept as a  
landscape planning tool**

Dr. Ruth Nussbaum, ProForest (UK)

***Nature Protection in the Caucasus: Promoting Transboundary Cooperation  
for CBD Implementation. 9-11 March 2006, Berlin - Germany***

***Biodiversity & Economy - from Buffer Zone Development to Regional  
Planning: Regional & Spatial Planning***

***The HCVF Concept as a landscape planning tool.***

***Dr Ruth Nussbaum, ProForest***

*The HCVF concept provides an approach to conservation planning which focuses on conservation attributes and addresses both environmental and social issues. It utilises, rather than replacing, existing information and initiatives. HCVF is being used in a range of contexts including landscape planning where it can be used at scales from individual ownership to regional land-use plans. It has proved a powerful tool for delivering a systematic, science-based and inclusive process which can be used by a range of actors from land managers and land-use planners to investors and campaigners.*

*High Conservation Value Forest (HCVF) is the forest required to ensure that High Conservation Values (HCVs) are maintained or enhanced. There are six HCVs:*

*HCV1. Forest areas containing globally, regionally or nationally significant concentrations of biodiversity values (e.g. endemism, endangered species, refugia).*

*HCV2. Forest areas containing globally, regionally or nationally significant large landscape level forests, contained within, or containing the management unit, where viable populations of most if not all naturally occurring species exist in natural patterns of distribution and abundance.*

*HCV3. Forest areas that are in or contain rare, threatened or endangered ecosystems.*

*HCV4. Forest areas that provide basic services of nature in critical situations (e.g. watershed protection, erosion control).*

*HCV5. Forest areas fundamental to meeting basic needs of local communities (e.g. subsistence, health).*

*HCV6. Forest areas critical to local communities' traditional cultural identity (areas of cultural, ecological, economic or religious significance identified in cooperation with such local communities).*

*A three-stage process is required to use the concept:*

- Identify the values: the HCVs present are identified through a process which uses all existing information, consultation with interested parties and collection of new information where needed.*

- *Identify the HCVF: The identified HCVs must be maintained or enhanced. This is done by first identifying the current protection and threats to the values, and then identifying the location and management of the forest needed to maintain or enhance the values within this context.*
- *Monitor: Finally, a monitoring programme is required to ensure that the values are being maintained.*

*The HCVF concept was originally developed to be used within forest certification. However, it is now used for a wide range of purposes including:*

- *Forest certification: HCVF was first developed by the FSC and is a requirement for all FSC-endorsed forest certification.*
- *Land-use planning: HCVF is being increasingly widely used to assist with landscape planning at all scales from individual ownership to entire regions.*
- *Purchasing and investment policies: many organisations have made commitments not to purchase from or invest in HCVF unless it is properly managed.*
- *Advocacy and campaigning: a number of organisations including WWF, Greenpeace and The Nature Conservancy are using the HCVF concept as an advocacy and campaigning tool.*

*The concept has proved very useful for landscape planning because:*

- *It is a framework which utilises existing approaches and initiatives, and does n't seek to replace them.*
- *It requires consultation with interested parties as part of the process, making it more inclusive and transparent.*
- *There is scope to collect new information where needed.*
- *It allows map-based presentation of information but also recognises that some values are not easily delineated on maps or must be identified locally.*
- *It works at any scale from an individual landholding to a region or country.*
- *It is a holistic approach encompassing both environmental and social issues.*
- *It provides a means for communication between different actors such as managers, planners, investors, customers and campaigners.*

*Further information on HCVF is available from the HCVF Resource Network at [www.hcvf.org](http://www.hcvf.org).*

## **The HCVF concept as a landscape planning tool**

**Dr Ruth Nussbaum**

**ProForest**

**March 06**

## **Overview**

- **What is the HCVF concept**
- **How is the concept used**
- **Why is it a useful landscape planning tool**
  
- **HCVF = High Conservation Value Forest**

## What is the HCVF concept?

- A conservation *framework*
- Focuses on identification and protection of *conservation attributes*
- Sets out a *process* to follow

HCVF3

## High Conservation Value Forest

*High Conservation Value Forest is the forest needed to maintain or enhance a High Conservation Value*



HCVF4

## High Conservation Values

- **HCV1: Significant concentrations of biodiversity**
- **HCV2: Significant large landscape-level forests**
- **HCV3: Rare or threatened forest ecosystems**



HCVF5

## High Conservation Values

- **HCV4: Basic services of nature in critical situations**
- **HCV5: Fundamental to provision of basic needs**
- **HCV6: Critical to traditional cultural identity**



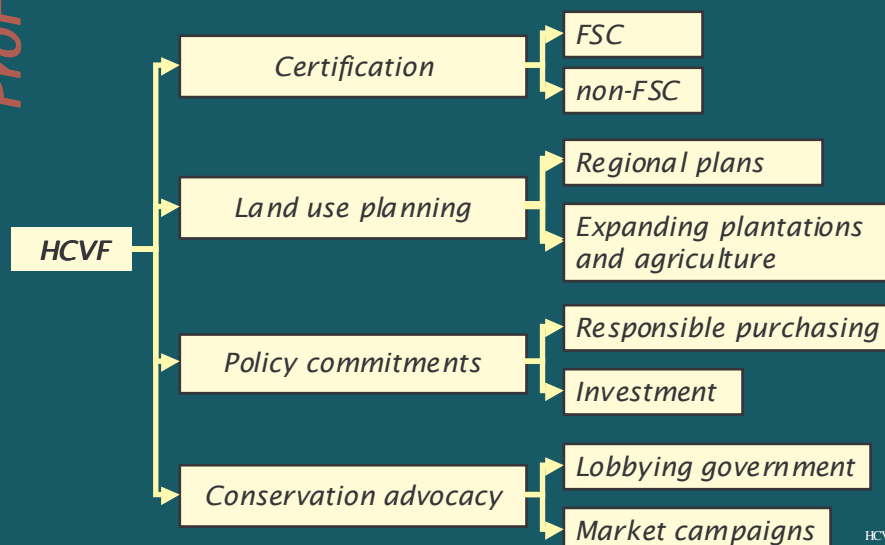
HCVF6

## HCVF Process

- **Identify values**
  - Utilise existing data and information
  - Consultation and field visits
- **Maintain or enhance values**
  - Existing protection and threats
  - Location and management of additional areas
- **Monitor to ensure values maintained**

HCVF7

## How HCVF is being used



HCVF8

## HCVF for land-use planning

- Provides a framework:
  - Uses existing information
  - Consultation with interested parties
  - New information only where needed



HCVF9

## HCVF for land-use planning

- All scales from local to regional
- Includes both environmental and social issues
- Link between different actors



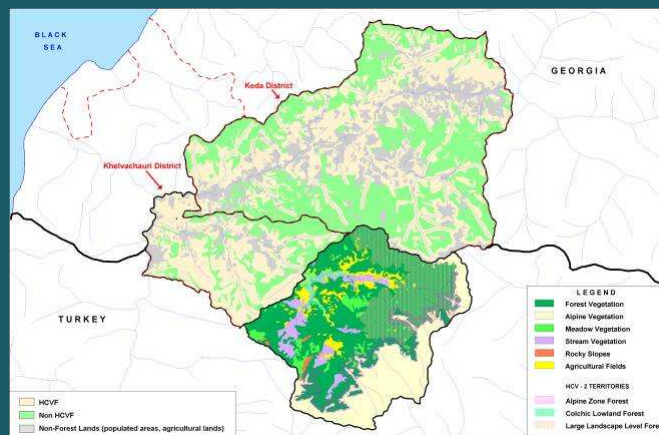
HCVF10

## HCVF in the Caucasus

- **Transboundary Colchic forest**
  - NE Turkey and SW Georgia
  - 83,000 ha
- **WWF-led project to provide support for ecoregional planning and identify:**
  - New protected areas
  - Commercial and community use
  - Priorities for restoration

HCVF11

## HCVF identified



HCVF12

## Conclusions

- HCVF concept being increasing widely accepted and used
- Uses existing approaches – doesn't replace them
- The HCVF Resource Network ([www.hcvf.org](http://www.hcvf.org))

# The HCVF Resource Network

January 2006



Although originally developed and defined by the FSC specifically for use in certification, the last few years have witnessed a prolific increase in the use of the High Conservation Value Forest (HCVF) concept. It is now being used for a range of purposes including land-use planning, conservation advocacy, and responsible purchasing and investment policies.

This expanding use of the HCVF concept is making it increasingly difficult for those involved to keep track of all the various initiatives and projects using the approach.

The idea of the HCVF Resource Network is to provide a means for all existing & potential HCVF stakeholders to stay up to date with developments, and to:

- facilitate discussion, information exchange and the sharing of experience between everyone using the HCVF concept
- help ensure that the approach is consistently understood and applied throughout the world.

## A network

The HCVF approach is being used in a wide variety of socio-ecological settings. Much of the support for further development in individual countries or regions will need to be specific to that area and provided in the local language. A single central point cannot do this, but it can be provided by a network of organisations operating regionally, and linked by a central facilitator.

The HCVF Resource network will be a multi-stakeholder entity, with initial core funding provided by WWF/World

Bank Alliance & Ikea; central facilitation of the network is being undertaken by ProForest.

## Activities

The HCVF Resource Network will attempt to co-ordinate a number of activities. To begin with, the two main areas will be the provision and exchange of information, and the provision of technical support and advice.

## **Information provision and exchange**

A major function of the resource network will be to act as a central bank of information on HCVF-related initiatives and projects around the world. This will be done primarily through the development of a dedicated website ([www.hcvf.org](http://www.hcvf.org)). The website will include an introduction to HCVF, and other relevant documents, summaries of HCVF-related projects, and a database of HCVF practitioners. To start with an initial website, providing a basic core of information will be made operational. Following this, additional stakeholders (ranging from practitioners to users of the HCVF concept) will be contacted with a view to encouraging them to use & register themselves (i.e. as practitioners) with the Resource Network, and to seek their input as to what sort of information is required.

## **Quality Control**

Discussions about the development of HCVF indicate that one of the most immediate gaps that need to be filled is the issue of maintaining the integrity of the HCVF concept, particularly when the approach is used outside of FSC certification. Currently, there is no structure or process to maintain quality or ensure consistency in the manner in which the HCVF approach is used. It is envisaged that this should be provided by a broad-based Steering Committee.

**Steering committee:** Representatives of key organizations are being invited to an initial Steering Group Convening meeting. These organizations have

been selected on the basis that they are perceived to have invested in the HCVF approach being used consistently and successfully, and so as to reflect social, environmental & economic interests. It is thus hoped that the concept of the Resource Network will be firmly anchored within major stakeholder groups.

It is envisaged that once the Resource Network is fully established, selected national organizations representing regional nodes will also have members on the Steering Committee.

The major function of the steering committee will be to provide a governance structure to maintain the integrity of the HCVF concept and provide guidance on quality control, specifically when the approach is used outside of FSC certification.

Additionally, it is hoped that through consultation within their own organizations, members of the steering committee will promote the use of the HCVF concept within their own networks.

ProForest's role will be to provide support by acting as a secretariat to the Steering Committee.

### **Further information from:**

ProForest

South Suite, Frewin Chambers,  
Frewin Court, Oxford, OX1 3HZ, UK

Tel: +44 1865 243439

### **Contacts:**

Nilofer Ghaffar [nilofer@hcvf.org](mailto:nilofer@hcvf.org)

Anders Lindhe [peltis@swipnet.se](mailto:peltis@swipnet.se)

# Сеть ресурсов ЛВПЦ

Конференция по ЛВПЦ в Архангельске

Декабрь 2005г.



Концепция Лесов высокой природоохранной ценности (ЛВПЦ/НСVF) была изначально разработана ЛПС (FSC) главным образом для использования в области сертификации. Но в последние годы эта концепция все чаще и чаще применяется для достижения различных целей, в том числе для планирования землепользования, пропаганды консервации, а также для разработки грамотной политики по закупкам и инвестициям.

Расширение сферы использования концепции ЛВПЦ означает, что становится все сложнее отслеживать все существующие инициативы и проекты, использующие данный подход.

Задача Сети ресурсов ЛВПЦ заключается в том, чтобы держать всех нынешних и потенциальных участников в курсе происходящего, а также в следующем:

- упрощение ведения дискуссий, обмена информацией и опытом между всеми, кто использует концепцию ЛВПЦ
- содействие последовательному ознакомлению с подходом и его внедрению во всем мире.

## Сеть

Подход ЛВПЦ используется в разнообразных социально-экологических условиях. Большая часть сопроводительной литературы, необходимой для дальнейшего развития в отдельных странах, должна ориентироваться на условия данного региона и распространяться на местном языке. С такой задачей не справиться одному центру, но она по силам сети организаций, действующих на региональном уровне и объединенных центральным координатором.

Сеть ресурсов ЛВПЦ будет организацией, состоящей из многих участников. На начальном этапе

основное финансирование будет предоставлено партнерством между Всемирным фондом дикой природы (WWF) и Всемирным банком, а также компанией "ИКЕА"; общую координацию сети осуществляет компания "ProForest".

## Мероприятия

Сеть ресурсов ЛВПЦ будет осуществлять координацию ряда мероприятий. Изначально двумя основными направлениями деятельности будет распространение и обмен информацией, а также предоставление технической помощи и консультаций.

## Распространение и обмен информацией

Основной функцией сети ресурсов является роль центрального банка информации по существующим в мире инициативам и проектам, связанным с ЛВПЦ. Эта функция в основном будет осуществляться с помощью специального сайта ([www.hcvf.org](http://www.hcvf.org)). Сайт будет содержать вводную информацию о ЛВПЦ и другие важные документы, отчеты о связанных с ЛВПЦ проектах, а также базу данных об участниках ЛВПЦ. В первую очередь будет создана первичная база данных, содержащая основную информацию. В дальнейшем всем заинтересованным организациям (от участников до пользователей концепции ЛВПЦ) будет предложено использовать Сеть ресурсов и зарегистрироваться в ней (в роли участников). Они также будут опрошены на предмет необходимости той или иной информации.

## Техническая поддержка

Дискуссии о развитии ЛВПЦ показывают, что одной из важнейших задач является поддержание целостности концепции ЛВПЦ, особенно в условиях применения подхода без сертификации FSC. В настоящее время не существует общепринятой структуры или процесса, направленных на поддержание качества и обеспечение последовательного применения подхода ЛВПЦ. Предполагается, что эта задача будет

возложена на Оргкомитет, созданный на широкой основе.

**Оргкомитет:** Представители и основных организаций приглашены на первое собрание по созданию Координационной группы. Эти организации отобраны по принципу их вклада в последовательное и успешное внедрение подхода ЛВПЦ, а также с целью представить различные социальные, экологические и экономические интересы. Таким образом, желательно, чтобы концепция Сети ресурсов получила поддержку основных заинтересованных групп.

Предполагается, что после того, как Сеть ресурсов будет окончательно организована, отдельные национальные организации получат возможность представительства в Оргкомитете.

Основная функция Оргкомитета будет заключаться в роли руководящей структуры, обеспечивающей сохранение целостности концепции ЛВПЦ и предоставляющей консультации по контролю над качеством, в особенности в условиях применения данного подхода без сертификации FSC.

Кроме того, желательно, чтобы путем консультаций в своих организациях члены Оргкомитета осуществляли содействие распространению концепции ЛВПЦ в собственных сетях.

Вклад компании "ProForest" будет заключаться в выполнении роли секретариата при Оргкомитете.

### Источники дальнейшей информации:

*ProForest, Tel: +44 1865 243439*

### Контактные лица:

*Anders Lindhe [peltis@swipnet.se](mailto:peltis@swipnet.se)*

*Nilofer Ghaffar [nilofer@proforest.net](mailto:nilofer@proforest.net), Alex Gozzi [alex@proforest.net](mailto:alex@proforest.net)*